

GXSWC\$ - Set GX Window Caption Text

The GXSWC\$ routine is available to set the GX Window Caption Text.

1. Invocation

To set the GX Window Caption Text code:

```
CALL GXSWC$ USING text
```

where *text* is the text-string **WHICH MUST BE TERMINATED WITH A BINARY ZERO** (i.e. a byte of LOW-VALUES).

2. STOP Codes and Exception Conditions

The following STOP codes may be generated by GXSWC\$:

STOP code	Description
23926	GXSWC\$ has been called by an application that is not running on GX.
23927	String too large for internal buffer
23928	An attempt was made to call GXSWC\$ on an incompatible version of GX. The version of GX must be V2.7, or later.
23929	An unexpected error has been reported by GX

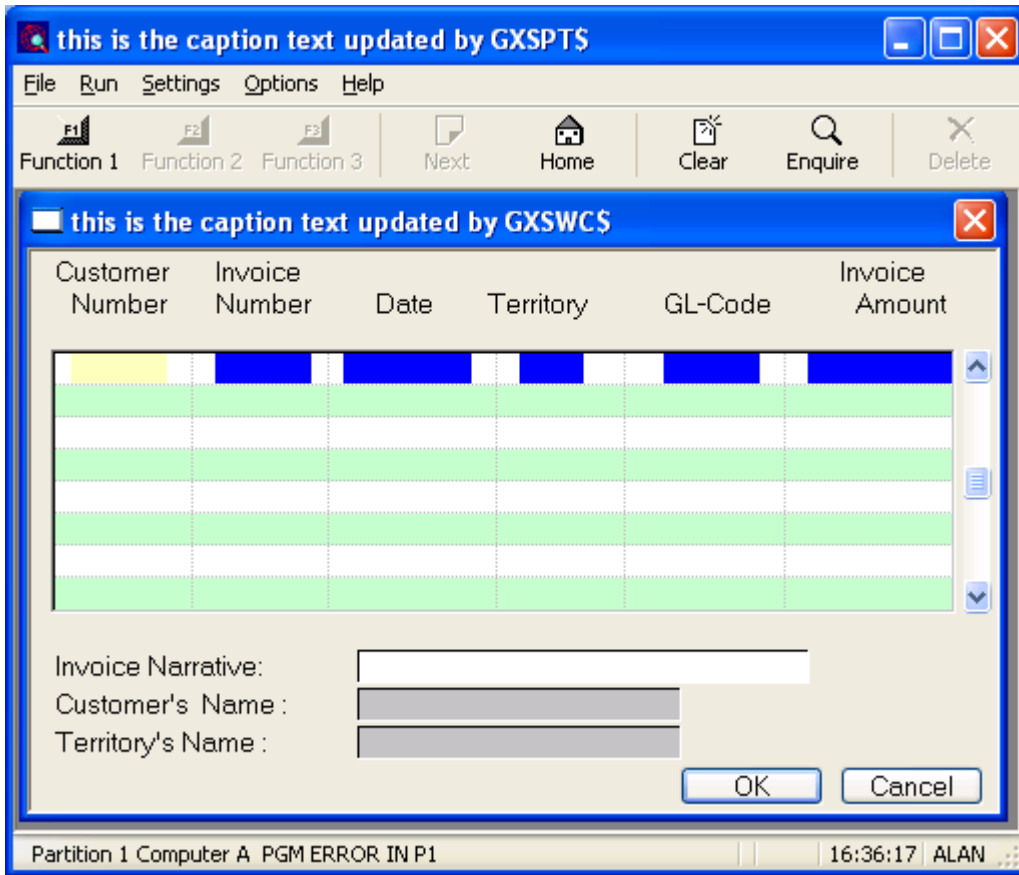
The following EXIT codes may be returned by GXSWC\$.

EXIT code	\$\$COND	Description
23922	22	Unable to allocate memory for temporary work buffer

3. Programming Notes

GXSWC\$ is only available when running on GX. Any attempt to use GXSWC\$ on a non-GX terminal will result in a STOP code.

The following screen shot illustrates the difference between GXSWC\$ and GXSP\$:



4. Examples

[EXAMPLES REQUIRED]

5. Copy-Books

None.

6. See Also

GXCPO\$ GX Caption Prefix Override
 GXSTP\$ Set Program Title