

GX Radio Buttons

The GX interface supports up to 9 groups of radio buttons per Speedbase window. Radio buttons are supported using a set of normal labels together with an associated field which is used to return the currently selected button. Each Radio Button label contains special text to indicate that it should be displayed as part of a radio button.

The limit of 9 groups of radio buttons per Speedbase window has been extended to 35 groups of radio buttons per Speedbase window for GX V3.2v, and later.

The special label text takes one of two forms. Either:

"~RnsText"

or:

"~LnsText"

where:

- R Display text to the right of the button
- L Display text to the left of the button
- n Group number (1 to 9 for GX pre-V3.2v; 1 to 9 or A to Z for GX V3.2v, and later)
- s Selection character (must be unique in the group)

Up to 9 groups of radio buttons can be specified for GX pre-V3.2v. Up to 35 groups of radio buttons can be specified for GX pre-V3.2v. Each Radio Button group acts independently of all the others. The selection character of the currently selected button is placed in the associated field and this value is returned when an accept takes place on another field on the window (i.e. clicking on a radio button does not send back the value immediately).

The single character field is associated with the group of buttons by placing it at the start location of one of the labels in the group. The field is not displayed on screen and the overlaid label is registered as the default. Note that the default button can also be specified from within the Speedbase application by initialising the field to one of the selection characters in the group.

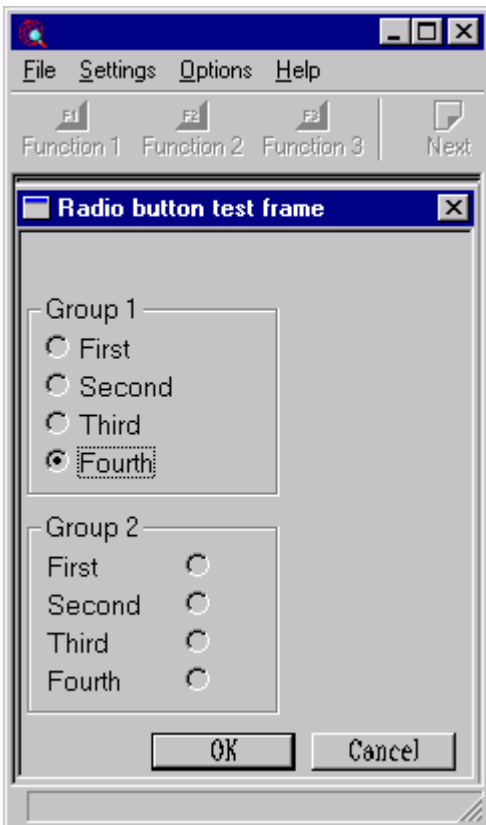
Example

```
PROGRAM RADIO
DATA DIVISION
01        MESSAGE
      02        FILLER    PIC X(?)
          VALUE        "1st response = "
      02        GR1        PIC X
      02        FILLER    PIC X(?)
          VALUE        " 2nd response = "
      02        GR2        PIC X
WINDOW W1
*
BASE AT 5 16
*
BOX 04 02 14 05 "Group 1"
BOX 10 02 14 05 "Group 2"
*
01 02 "Radio button test frame"    A12
*
05 02 "~R1FFirst "            NSC
06 02 "~R1SSecond"           NSC
07 02 "~R1TThird "            NSC
```

```

08 02 "~R10Fourth"      NSC
08 02 GR1              X   NSC
*
11 02 "~L2FFirst  "    NSC
12 02 "~L2SSecond"    NSC
13 02 "~L2TThird  "    NSC
14 02 "~L20Fourth"    NSC
12 02 GR2              X   NSC
*
ROUTINES SECTION
*
ENDWINDOW
*
PROCEDURE DIVISION
*
    ENTER WINDOW W1
    ON EXCEPTION
    END
    DISPLAY MESSAGE
    SUSPEND 10
    EXIT
*
ENDPROG
ENDSOURCE

```



Version Requirements

GX V2.8d (for 9 groups per window)
 GX V3.2v (for 35 groups per window)