

FADEL\$ - Display File Already Exists Dialogue on GX

The FADEL\$ routine can be used to display a "File Already Exists" style dialogue box on GX.

1. Invocation

To display a "File Already Exists" dialogue box on GX code:

```
CALL FADEL$ USING fl file_name
```

where *file_name* is a zero-terminated string which specifies the file-name; and *fl* is a control block of the following structure:

```

01  FL
   02  FLMODE          PIC 9 COMP          * 0 if the file is going to
                                           * be overwritten by another file
                                           * 1 if the file will be deleted
                                           * and re-created
                                           * Line of window
   02  FLLINE          PIC 9(4) COMP       * Column of window
   02  FLCOL           PIC 9(4) COMP
   02  FLLIST          PIC 9 COMP          * 0 when a single file is being
                                           * processed
                                           * 1 when a list of files is being
                                           * processed
   02  FLDES1          PIC X(40)          * Up to 40 characters for the 1st
                                           * filename extra text e.g.
                                           * this could contain the file size
   02  FLUNI1          PIC X(3)           * Unit for the 1st file name,
                                           * or SPACES for non-Global files
   02  FLDES2          PIC X(40)          * Up to 40 characters for the 2nd
                                           * file name extra text
   02  FLUNI2          PIC X(3)           * Unit for the 2nd file name,
                                           * or SPACES for non-Global files
   02  FLFLAG          PIC 9 COMP          * Returned button flag
                                           * 0 = "No" button selected
                                           * 1 = "Yes" button returned
                                           * 2 = "Cancel" button returned
                                           * 3 = "Yes to all" button

```

2. STOP Codes and Exception Conditions

The following STOP codes may be generated by FADEL\$:

STOP code	Description
13703	FADEL\$ has been called by an application that is not running on GX.
13705	The length of text passed to the FADEL\$ routine is invalid or exceeds 8Kb.

The following exception conditions may be returned by FADEL\$:

EXIT code	\$\$COND	Description
-----------	----------	-------------

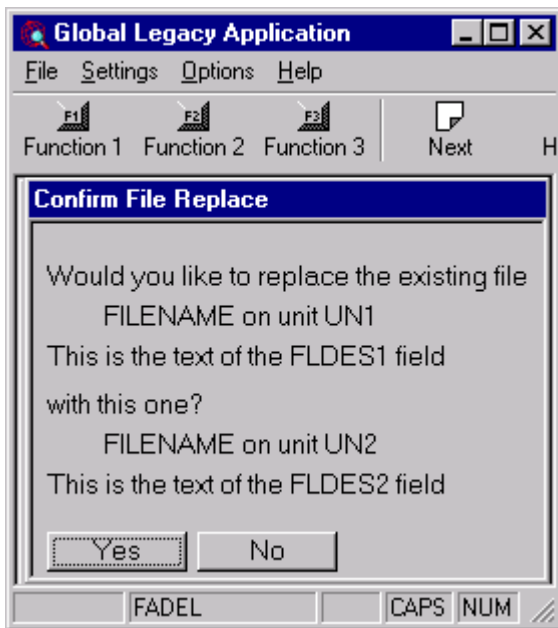
13703	3	An internal error has occurred (FADEL\$ was unable to allocate an additional temporary data page)
-------	---	---

3. Programming Notes

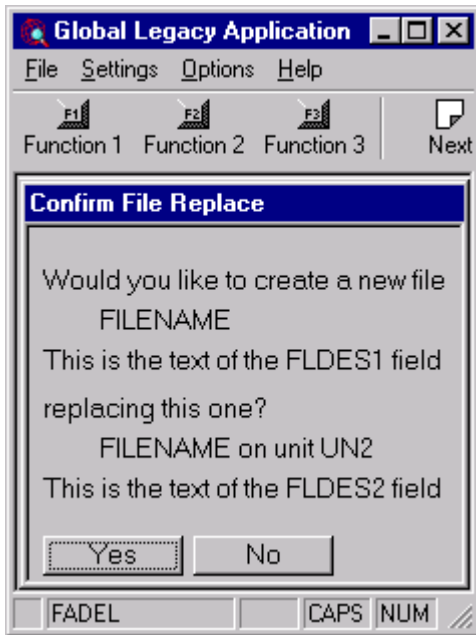
FADEL\$ is only available when running on GX. Any attempt to use FADEL\$ on a non-GX terminal will result in a STOP code.

The behaviour of FADEL\$ depends on the values of FLMODE and FLLIST.

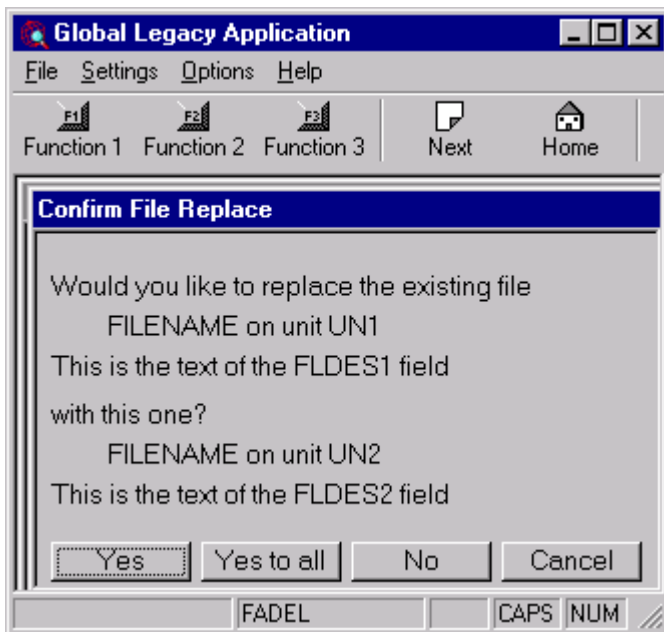
If FLMODE is 0 and FLLIST is 0 a dialogue box of the following format:



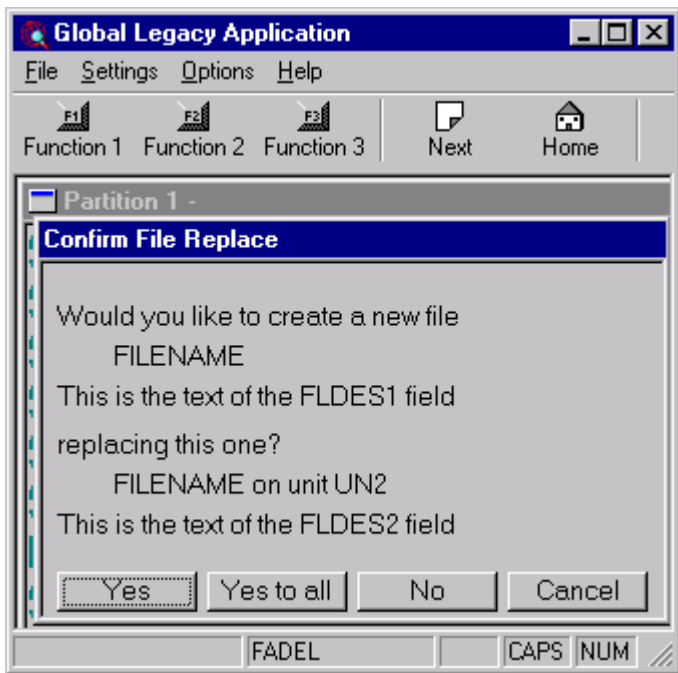
If FLMODE is 1 and FLLIST is 0 a dialogue box of the following format:



If FLMODE is 0 and FLLIST is 1 a dialogue box of the following format:



If FLMODE is 1 and FLLIST is 1 a dialogue box of the following format:



The default button is always "Yes". This default **cannot** be changed.

Important Note: No actual file copying or deletion is performed by this routine. Only the results of the selected button are returned in FLFLAG.

4. Examples

[EXAMPLES REQUIRED]

5. Copy-Books

See copy-book "\$f" in copy-library S.SYS32. Note that this copy-book **MUST** be expanded using a SUBSTITUTING clause. For example:

```
COPY "$f" USING "FL"
```

6. See Also

None.